



INSTRUCTIONS



AVAILABLE KITS

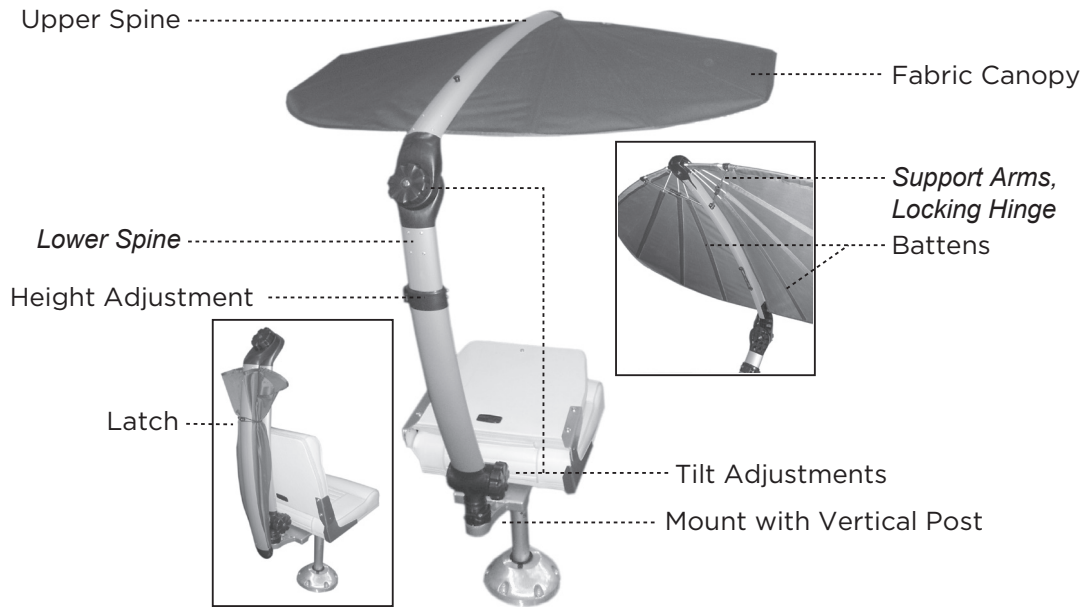
- T10-4000-1 ShadeFin® Mini with White Fabric & Bag, no mount
- T10-4000-2 ShadeFin® Mini with Black Fabric & Bag, no mount
- T10-4000-3 ShadeFin® Mini with White Fabric, Bag & Swivel Seat Mount Kit
- T10-4000-4 ShadeFin® Mini with Black Fabric, Bag & Swivel Seat Mount Kit
- T10-4000-5 ShadeFin® Mini with White Fabric, Bag & Square Rail Mount Kit
- T10-4000-6 ShadeFin® Mini with Black Fabric, Bag & Square Rail Mount Kit
- T10-4000-16 ShadeFin® Mini with White Fabric, Bag & Round Rail Mount Kit
- T10-4000-17 ShadeFin® Mini with Black Fabric, Bag & Round Rail Mount Kit
- T10-4000-18 ShadeFin® Mini with White Fabric, Bag & Kayak Mount
- T10-4000-19 ShadeFin® Mini with Black Fabric, Bag & Kayak Mount

AVAILABLE MOUNTING OPTIONS (sold separately)

- T10-4000-7 Clamp Mount
- T10-4000-8 Deck Mount
- T10-4000-9 Square Rail Mount
- T10-4000-10 Rod Holder Mount
- T10-4000-11 Semi-Flush Mount
- T10-4000-12 Side Wall Mount
- T10-4000-13 Swivel Seat Mount
- T10-4000-14 Kayak Mount
- T10-4000-15 Round Rail Mount

Thank you for purchasing ShadeFin® Mini by TACO Marine®. Since 1959, we have taken great pride in offering the highest-quality products with excellent customer service. We stand behind our products 100 percent. Please visit our website tacomarine.com for more detailed information on a wide variety of products and to register your ShadeFin Mini for warranty.

SHADEFIN MINI DIAGRAM



TACO®

Handy Tips

ShadeFin Mini is "plug-and-play", but you will first need to install a mount, which is included in ShadeFin Mini kits and sold separately. Please reference page 1 for available kits and mounting options. Use your ShadeFin Mini in several places. At TACO, we supply several mounts for a variety of applications. Take your ShadeFin Mini almost anywhere!



Clamp Mount



Deck Mount



Square & Round Rail Mounts



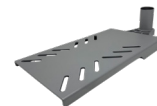
Rod Holder Mount



Semi-Flush Mount



Side Wall Mount



Swivel Seat Mount

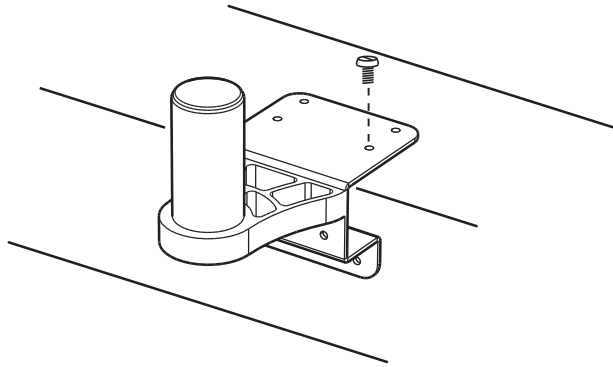


Kayak Mount

INSTALLATION INSTRUCTIONS

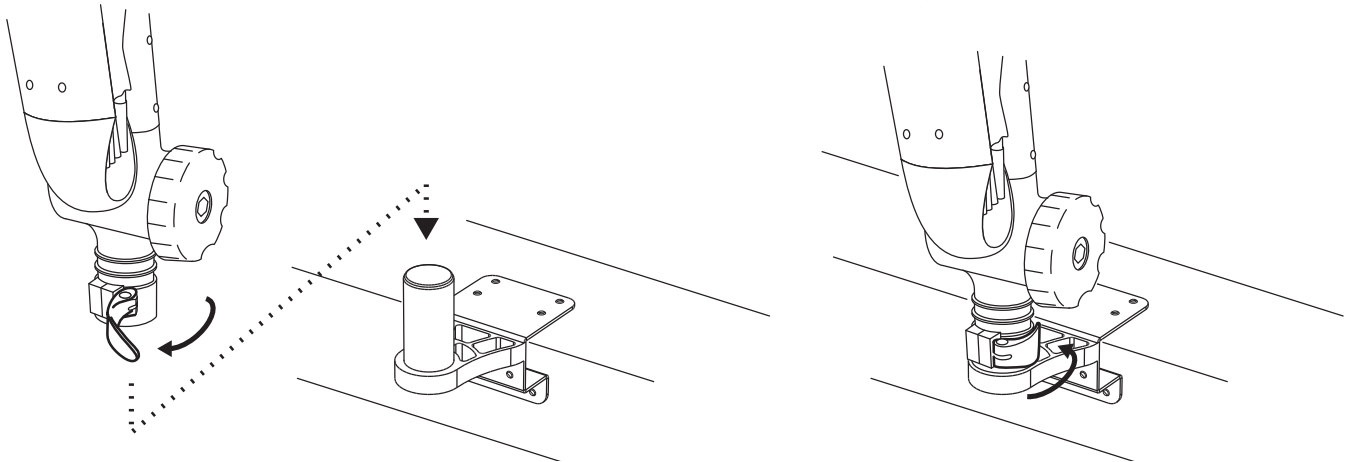
1 **INSTALL MOUNT**

According to the directions for your particular mount(s).



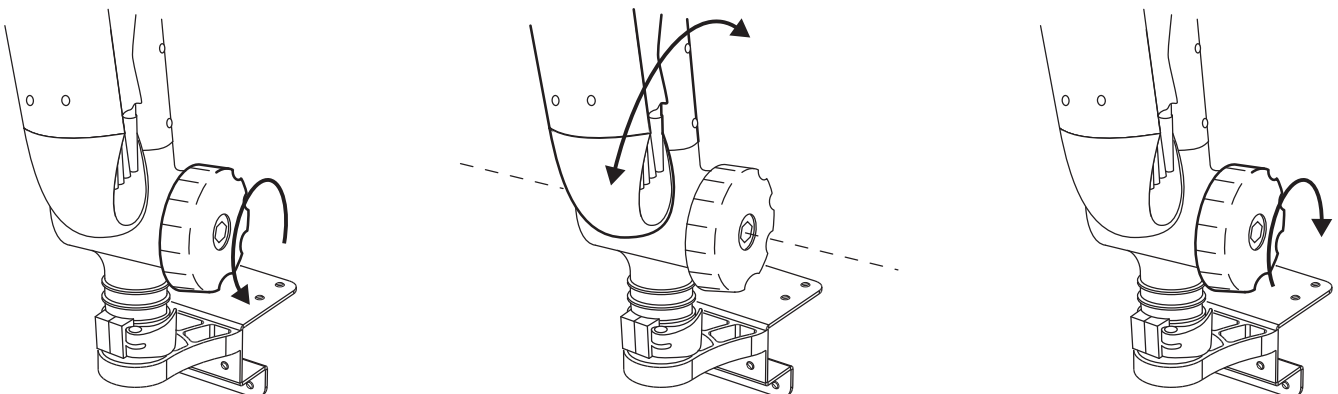
2 **PLACE SHADEFIN MINI ONTO MOUNT**

With latch mechanism in the open position, lower the base of ShadeFin Mini onto vertical Post and adjust to desired position. Then fully close the latch mechanism until it “locks” into place. Use the tightening lever on the lock nut of the latch to adjust the tension as needed to prevent rotation when latch is locked. (See Use & Care for more information.)



3 **ADJUST FRONT-TO-BACK POSITION**

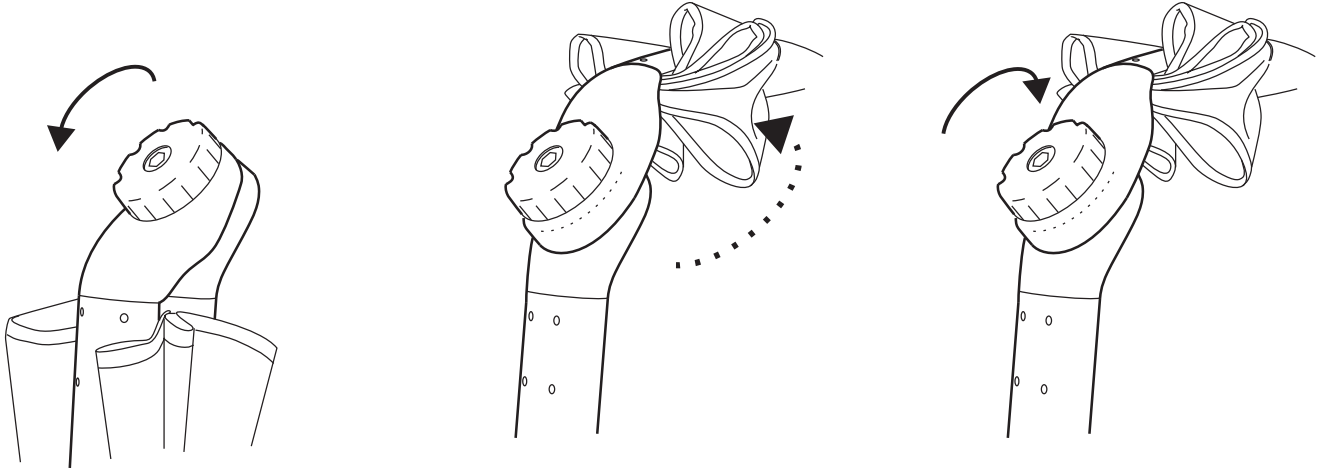
Loosen knob (counterclockwise) all the way, adjust angle, and fully tighten knob (clockwise) until secure.



INSTALLATION INSTRUCTIONS

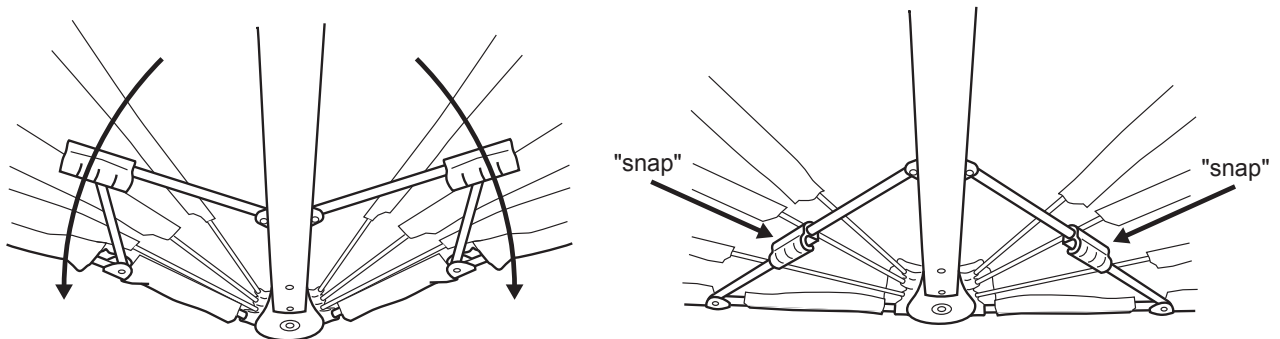
4 SWING UPPER SPINE INTO PLACE

Loosen the knob (counterclockwise) all the way. Rotate upper spine into desired position. Fully tighten knob until secure.



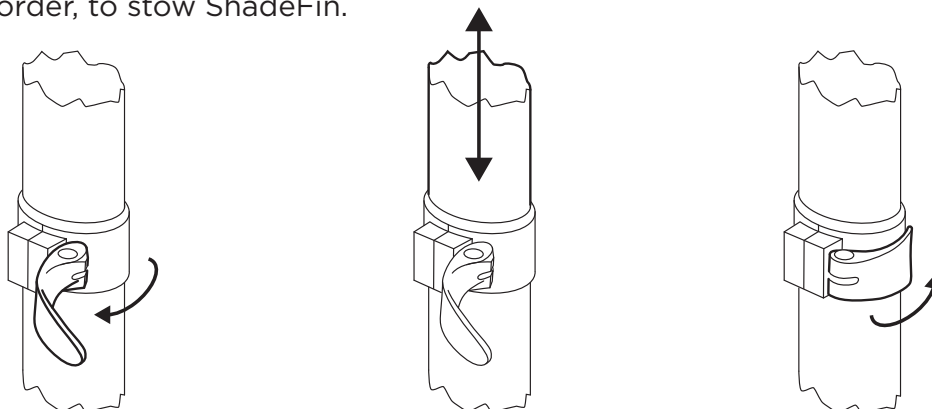
5 DEPLOY CANOPY

Rotate the leading edge of one or both fabric shells into place, after unfastening the elastic loops. Press locking hinge of support arm(s) into place, securing canopy in the open position.



6 ADJUST HEIGHT

With telescopic latch mechanism in the open position, raise the canopy vertically to the desired height, then fully close the latch mechanism until it “locks” into place. Adjust pivot points as needed to optimize the location of ShadeFin Mini for best protection. Follow these same steps, in reverse order, to stow ShadeFin.



USE & CARE

ShadeFin Mini was designed and has been tested to effectively function in a wide array of environmental conditions. However, for safety reasons, and in order to provide a cost-effective solution, TACO Marine has defined certain user guidelines that serve as the basis by which TACO will warrant the ShadeFin Mini product. Using ShadeFin Mini in ways or conditions that exceed our recommended guidelines could cause premature damage to the product and will likely reduce the life of the product. Usage outside of these guidelines could result in injury and will void your warranty.

Following these usage guidelines, and exercising common sense, will ensure that your ShadeFin Mini will provide you with years of comfort and protection while enabling you to have more enjoyable outdoor experiences.

DEPLOYMENT & ADJUSTMENTS CAMS (LATCH MECHANISMS)

After placing your ShadeFin Mini on your mount, and adjusting for the desired position, always be sure to fully lock the cam to ensure a tight fit for this connection. Similarly, for the height adjustment, always be sure the cam is in the locked position once the desired height adjustment is determined.

Should your ShadeFin Mini fit become too loose onto your mount or height adjustment, tighten (in small intervals) the lock nuts, which are located on the left side of both latch mechanisms, until the desired fit is achieved. Over-tightening and loosening, or removing of the lock nuts could over time reduce its effectiveness and require replacement.

KNOBS (TILT ADJUSTMENTS)

Always fully loosen the knobs when setting and adjusting the angles, and then fully tighten the knobs once the desired angles are achieved to ensure the ShadeFin will stay securely at the desired position. Should the fit become too loose on your tilt adjustment mechanisms, tighten (in small intervals) the lock nuts, which secure the knobs, until the desired fit is achieved. Over-tightening and loosening, or removing the lock nuts could over time reduce its effectiveness and require a replacement.

USING SHADEFIN MINI WHILE MOVING AND IN THE WIND

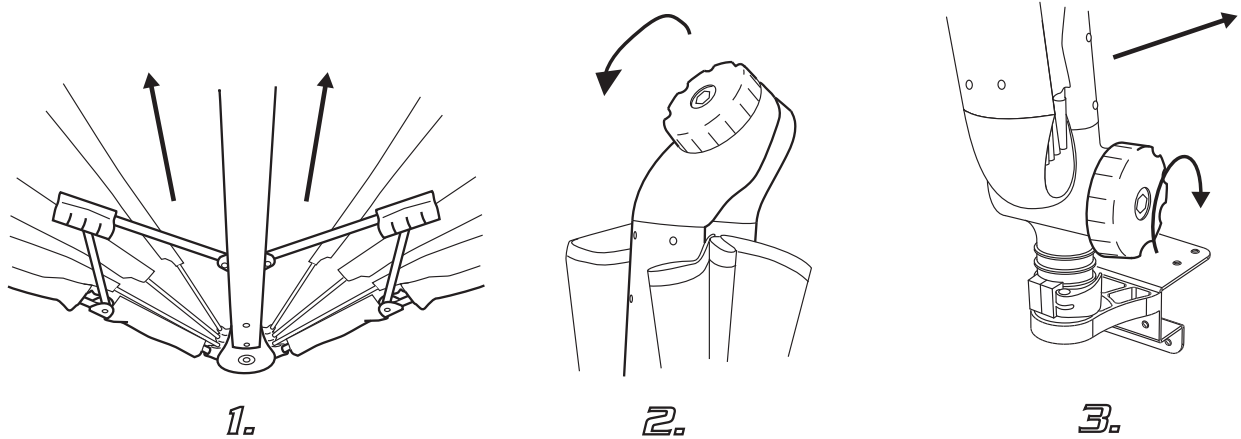
TACO Marine recognizes that wind can be a factor in many outdoor excursions. ShadeFin Mini's aerodynamic canopy has been uniquely designed to minimize the impact of the wind. However, the ShadeFin Mini is not designed to withstand high travel speeds and/or wind. Therefore TACO Marine has provided the following specific guidelines to ensure your ShadeFin Mini will provide years trouble-free comfort and protection.

When moving more than a few MPH, always position ShadeFin Mini in the overhead position. TACO Marine recommends and warrants using ShadeFin Mini only when combinations of travel and wind speed are 15 miles per hour or less. Operating at travel and wind speeds greater than 15 mph with the ShadeFin Mini in the open position is not recommended and will void your warranty. When you want to travel at speeds in excess of 15 mph, TACO Marine recommends that you close the fabric into the upper spine of ShadeFin Mini, attach the fabric catch, loosen the pivot knob and swing your ShadeFin Mini back so that the upper spine overlaps the lower spine and re-tighten the pivot knob. This takes just a few seconds and now you can travel at high speeds.

USE & CARE

STORING THE SHADEFIN MINI WHILE MOVING AT HIGH SPEEDS

ShadeFin Mini has not been designed to withstand high travel speeds while open. However, you can simply close your ShadeFin Mini and keep it on its mount while traveling at high speeds by following the instructions below. Closing and securing your ShadeFin Mini only takes a few seconds.



By following these simple guidelines you can expect to travel safely while enjoying years of trouble-free comfort and protection.

CLEANING & CARE

With a minimum of care, ShadeFin Mini will remain attractive and functional for years. TACO Marine recommends that you always rinse off your ShadeFin Mini with freshwater after exposure to saltwater and let it dry before storing.

FABRIC REMOVAL

The fabric top on your ShadeFin Mini is easily removable for cleaning. The top is secured by velcro along the upper spine. To remove, start by holding the fabric near the base of the upper spine and gently separate the fabric from the spine. Once the fabric is separated along the entire spine, separate the velcro connected fabric at the innermost portions of the ShadeFin Mini arms. Now the top can be easily removed by sliding it off of the arms and battens.

WeatherMAX fabrics may be spot washed using a soapy solution of a mild detergent and lukewarm water. Rinse thoroughly with clean water to remove soap and allow it to air dry. For mildew stains, prepare a solution of (1) cup bleach plus (1/2) cup of mild detergent per gallon of water. Spray on the entire area and allow soaking. Rinse with clean water and allow it to air dry.

USE & CARE

CLEANING

One of the best ways to keep fabrics looking good and to delay the need for deep or vigorous cleanings is to hose fabrics off on a monthly basis with freshwater. This practice will help prevent dirt from becoming deeply embedded in the fabric and eliminate the need for more frequent vigorous cleanings. In most environments, a thorough cleaning will be needed every two to three years.

ShadeFin Mini's fabric is WeatherMAX® 3D - Super high strength and durability combined with long-term color retention to deliver a truly versatile outdoor fabric for a variety of applications.

WeatherMAX fabrics may be spot washed using a soapy solution of a mild detergent and lukewarm water. Rinse thoroughly with clean water to remove soap and allow it to air dry. For mildew stains, prepare a solution of (1) cup bleach plus (1/2) cup of mild detergent per gallon of water. Spray on the entire area and allow soaking. Rinse with clean water and allow it to air dry.

SHADEFIN MINI SPINES & PLASTIC

The anodized aluminum spines and plastic should be wiped clean as needed with a non-abrasive household cleaner, such as a citrus based multi-purpose cleaner.

STORAGE

ShadeFin Mini fabrics and components are rot, mildew and rust resistant, however we recommend that you do not store ShadeFin Mini wet for extended periods of time. If wet, simply wipe off and leave the fabric in the open position until dry before storing.

WARNING



WARNING

FLYING OBJECT CAN CAUSE SERIOUS INJURY OR DEATH



DO NOT USE SHADEFIN IN CLOSED OR DEPLOYED POSITION WHILE BOAT IS UNDERWAY.

LOCK ALL MOUNTS AND PINS BEFORE DEPLOYING SHADEFIN.

MOVING PARTS CAN PRODUCE PINCH POINTS.
KEEP CLEAR!

Need Support?

Contact Us



support@tacomarine.com



<https://tacomarine.com/technical-support>



3020 North Commerce Parkway
Miramar, FL. 33025

Like, subscribe and follow us on YouTube, Facebook, Instagram and Twitter, where we post regular boating content and engaging how-to videos.



@tacomarine



@taco_marine

#ShadowInSeconds